



# FUBUKI<sup>®</sup> XF

NEUROVASCULAR LONG SHEATH

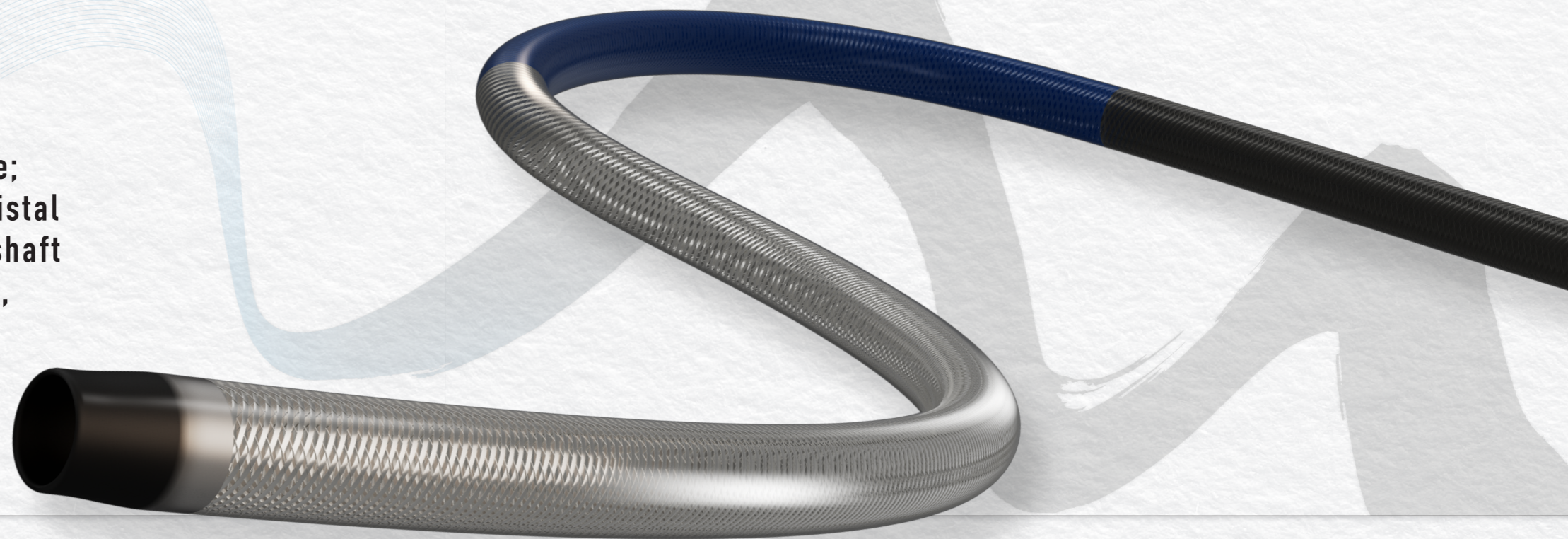


YOUR DREAMS. WOVEN TOGETHER.



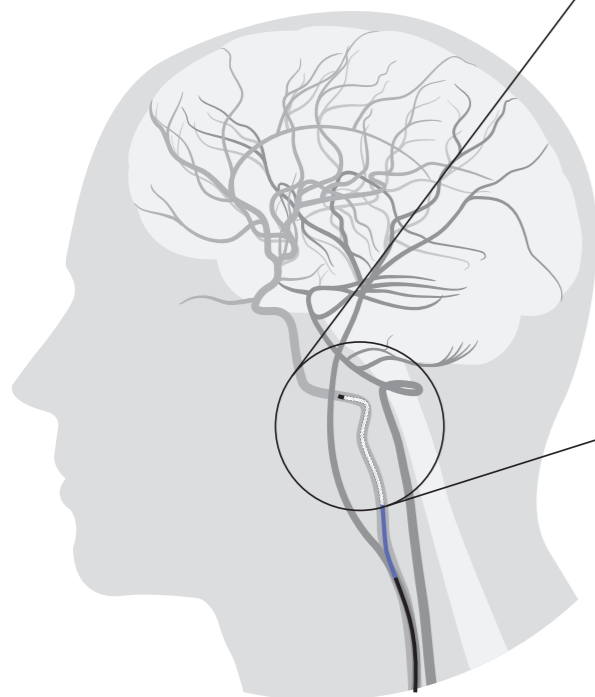
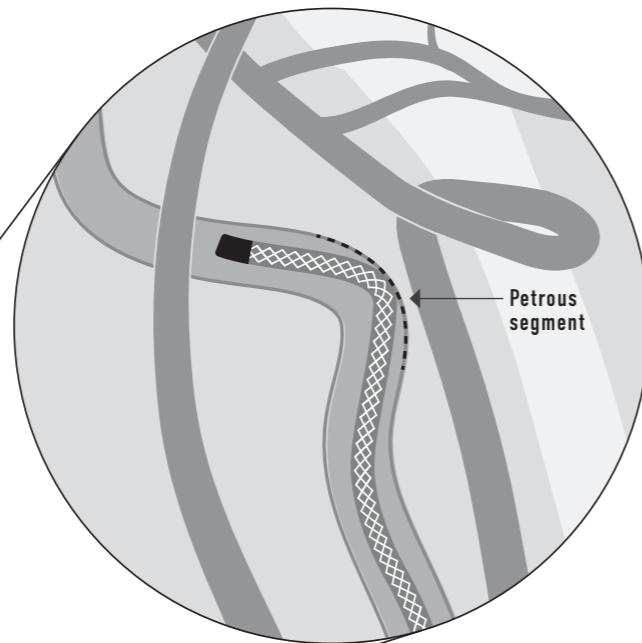
# FUBUKI® XF

Distal positioning simplifies the procedure; the FUBUKI XF atraumatic tip, enhanced distal trackability, and well-balanced proximal shaft allow for quick and easy distal placement, even in challenging anatomy.

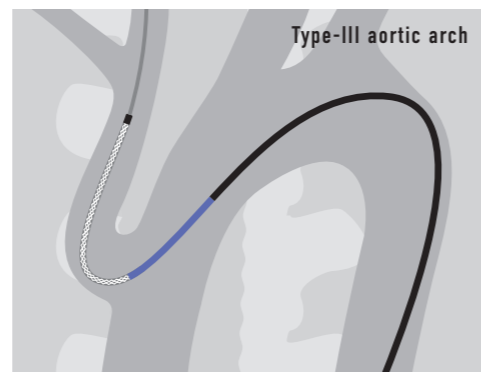


## Enhanced Trackability

Due to its extremely flexible distal shaft, FUBUKI XF can be advanced to the petrous segment to provide catheter back-up during device delivery.

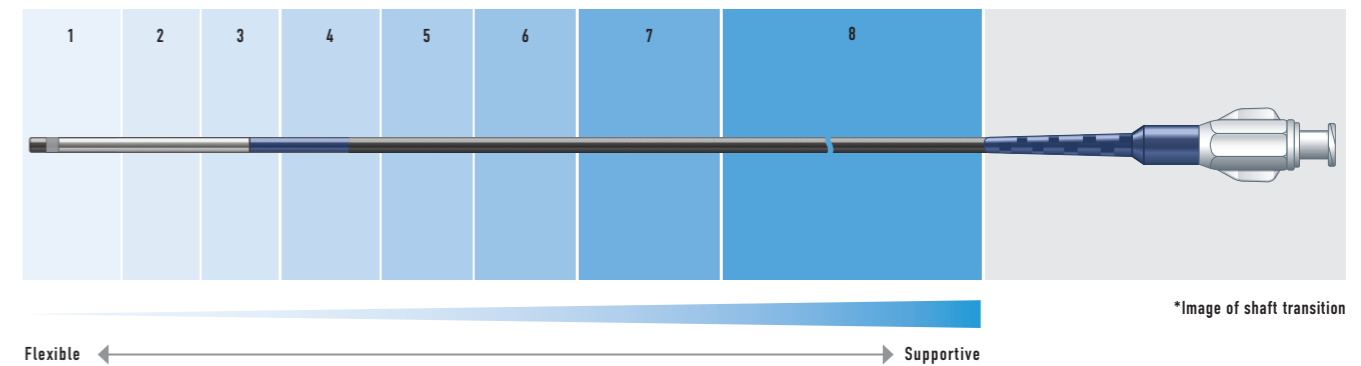


Balanced shaft provides superior trackability in Type-III aortic arch cases.



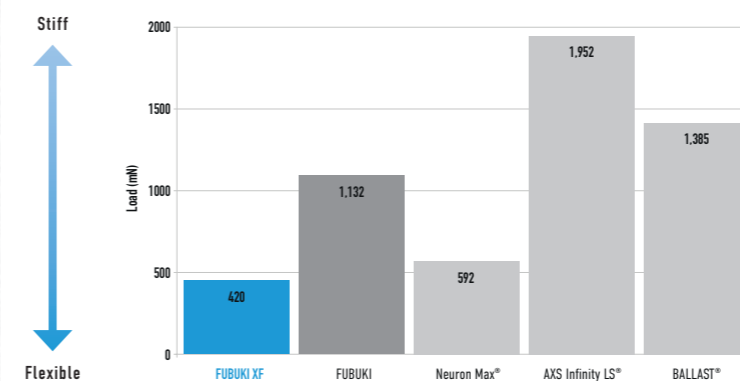
## Variable Shaft Stiffness

Balanced shaft achieved by 8 transition zones enhances both trackability and support.



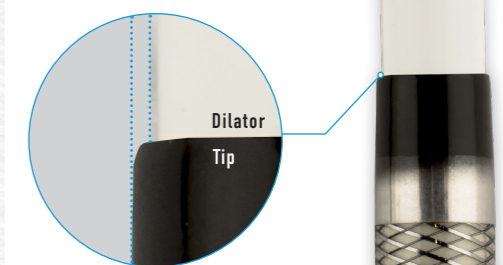
## Atraumatic Tip

The FUBUKI XF has an atraumatic rounded tip and highly flexible distal shaft providing superior trackability and reducing potential vessel trauma.



\*1 The above data was obtained by company standardized test, which may differ from industry standardized tests.  
\*2 The above data does not guarantee that all devices have exactly the same performance with the samples used for these tests.









## Seamless Transition



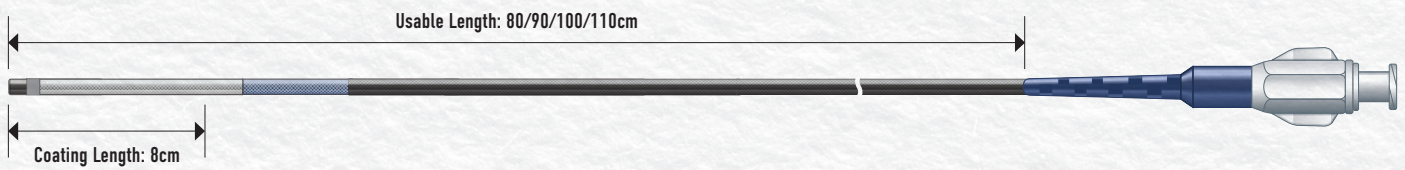
Minimal ledge protrusion between dilator and tip provides a seamless transition aiding insertion and trackability.



## Structure & Ordering Information

Product	Catalog No.	I.D.	O.D.	Usable Length	Coating Length	Tip Shape
FUBUKI XF 6Fr Long Sheath	FBKX-8A80DY	2.28mm / 0.090"	2.70mm / 8Fr	80cm	8cm	Angle 
	FBKX-8S80DY	2.28mm / 0.090"	2.70mm / 8Fr	80cm	8cm	Straight 
	FBKX-8A90DY	2.28mm / 0.090"	2.70mm / 8Fr	90cm	8cm	Angle 
	FBKX-8S90DY	2.28mm / 0.090"	2.70mm / 8Fr	90cm	8cm	Straight 
	FBKX-8A100DY	2.28mm / 0.090"	2.70mm / 8Fr	100cm	8cm	Angle 
	FBKX-8S100DY	2.28mm / 0.090"	2.70mm / 8Fr	100cm	8cm	Straight 
	FBKX-8A110DY	2.28mm / 0.090"	2.70mm / 8Fr	110cm	8cm	Angle 
	FBKX-8S110DY	2.28mm / 0.090"	2.70mm / 8Fr	110cm	8cm	Straight 

## FUBUKI XF



## Accessories

RHV



Dilator



© 2022 ASAHI INTECC CO., LTD.

"FUBUKI" is trademark or registered trademark of ASAHI INTECC CO., LTD. in Japan and other countries.

All other trademarks are the property of their respective owners.

Some materials / graphics were provided by Vascular Perspective – [www.vascularperspectives.com](http://www.vascularperspectives.com). MKT0837 Rev A

Manufactured by:

 ASAHI INTECC

Toll Free: 855-286-9474 Fax: 949-756-8146  
[WWW.ASAHI-INTECC-US.COM](http://WWW.ASAHI-INTECC-US.COM)

Distributed by:



for Android



for iOS

ASAHI product information

P22108\_B\_US\_1.0