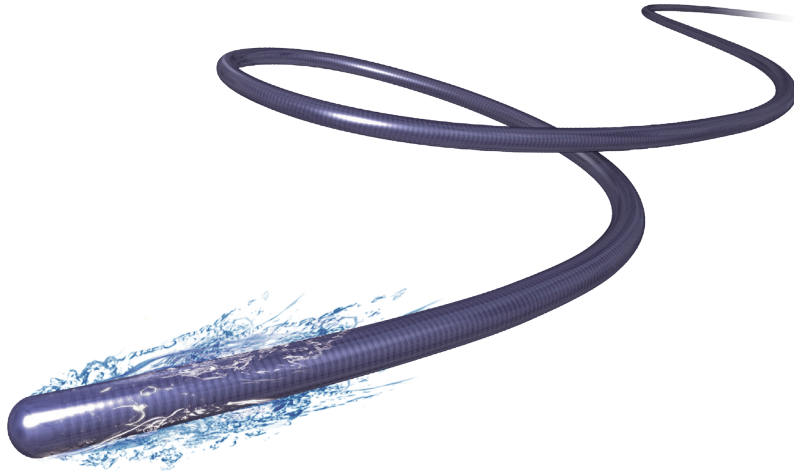


NEW

ASAHI SION black

紫苑
PTCA GUIDE WIRE

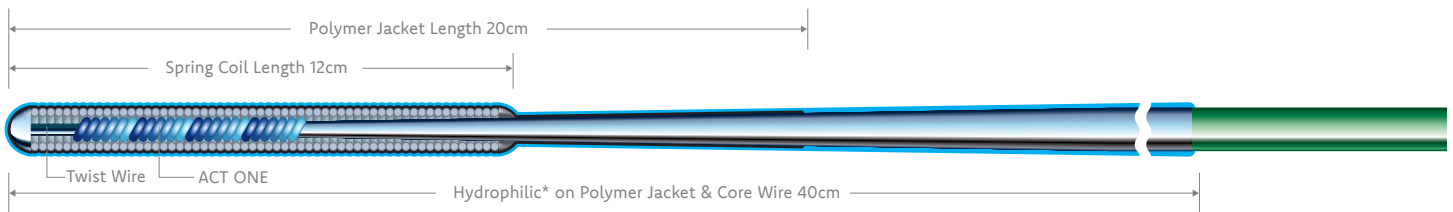


ACT ONE® for precise torque response

Polymer jacket for lubricity

Improved tip flexibility for tracking

Twist wire for enhanced tip durability



ASAHI® SION® black

- Hydrophilic* coating on a polymer jacket provides lubricity
- ACT ONE provides torque response
- Twist wire component improves tip durability

TIP

Load: 0.8 gf
Radiopacity: 3cm

COATING

Hydrophilic* Coating on a Polymer Jacket & Core Wire

COMPONENTS

ACT ONE - Improves torque and durability

Twist Wire - Improves distal tip flexibility and durability

Polymer Jacket + Hydrophilic* Coating for lubricity

LENGTHS

190cm
300cm

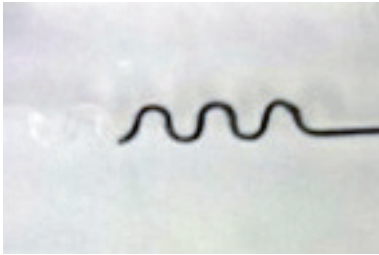
SHAPES

Straight, J, Preshaped
(see ordering information)

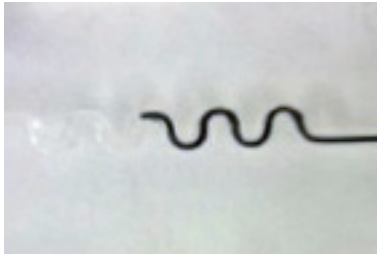
BETTER TRACKING

Tracking Test: A guide wire is passed through a continuous curve with a 1mm radius

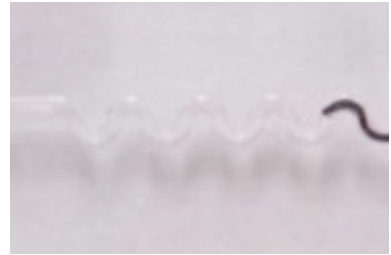
ASAHI
SION black
PTCA GUIDE WIRE



FIELDER® FC



Whisper® MS



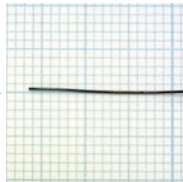
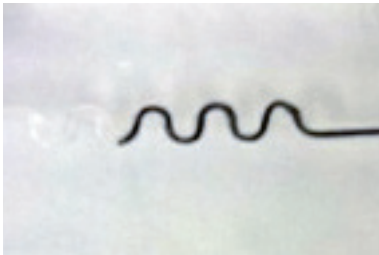
*The above data was obtained by company standardized tests, which may differ from industry standardized tests.

*The above data does not prove that all devices have exactly the same performance with the samples used for these tests.

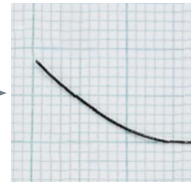
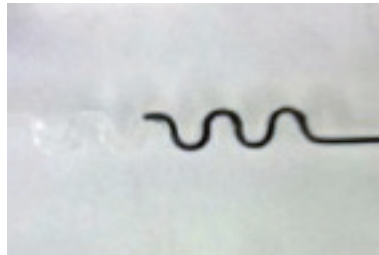
BETTER DURABILITY

Durability of tip after putting GW through tortuosity

ASAHI
SION black
PTCA GUIDE WIRE



FIELDER FC



*The above data was obtained by company standardized tests, which may differ from industry standardized tests.

*The above data does not prove that all devices have exactly the same performance with the samples used for these tests.

ORDERING INFO			
PRODUCT	CATALOG NO. (Box of 5)	LENGTH (CM)	TIP SHAPE
SION black 190cm, Straight	APW14R010S	190cm	Straight
SION black 190cm, J Shape	APW14R010J	190cm	J Shape
SION black 190cm, Pre-shape	APW14R010P	190cm	Pre-shape
SION black 300cm, Straight	APW14R310S	300cm	Straight
SION black 300cm, J Shape	APW14R310J	300cm	J Shape
SION black 300cm, Pre-shape	APW14R310P	300cm	Pre-shape



ASAHI INTECC

Toll Free: 855-286-9473 | Fax: 949-756-8146

WWW.ASAHI-INTECC-US.COM

© 2019 ASAHI INTECC CO., LTD. "ASAHI", "ACT ONE", "SION" and "FIELDER" are trademarks or registered trademarks of ASAHI INTECC CO., LTD. in Japan and other countries. All other trademarks are the property of their respective owners. *Coated with SLIP-COAT® coating. Some materials / graphics were provided by Vascular Perspectives – www.vascularperspectives.com.

K19201_B_LC_1.0 MKT AIU 220 Rev. A